



LOOSE PARTS PLAY



WHAT IS LOOSE PARTS PLAY?

Loose parts are everyday objects, that you can be used freely to create, explore, develop curiosity and imagination. Loose parts from nature provide a wonderful sensory experience.

WHAT DO I DO?

The best thing about loose parts play is that there are no instructions! Simply look for a range of everyday objects and natural materials, and use your imagination to explore! What do you imagine you could do with them?

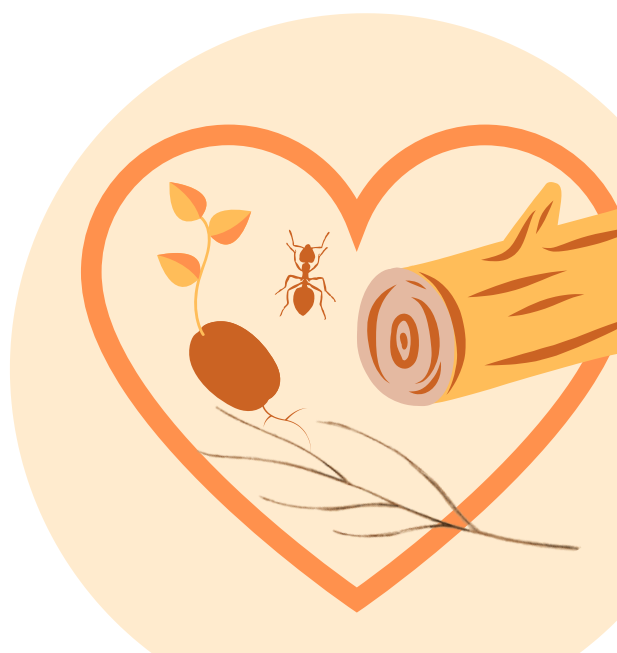


WHAT DO I USE?

Loose parts can be anything that can be found around the home, and in the natural world. Some examples of natural materials are seed pods, sticks, stones, feathers, leaves, sand, shells and twigs.

STEP 4: SHOW RESPECT & KEEP LEARNING

Remember to care for your natural environment by leaving the loose parts from nature where you found them when you are done, and making sure you aren't disturbing any animal or critter's homes.



Introducing simple, everyday objects can improve creativity, boost social and problem-solving skills and support inclusion. Using natural materials helps to promote engagement of the senses.

